

# QUALITY AND DEPENDABILITY

*Now . . . and  
throughout your  
Practice Years*



**MID BASE  
MB - 700A/C**

*The Mid Base is a Dedicated  
Foot & Ankle X-Ray Machine*

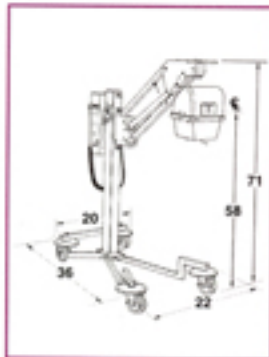
# X-CEL

**X-RAY® CORPORATION**

## MOBILE P-700 A/C



- 28 inch SID
- Mobile system brings X-ray to patient
- Large casters roll easily
- Short wheel base easy to position
- X-ray from chair or poser
- Withstands constant moving
- Factory set for 8" poser
- Other X-ray head mounting heights available



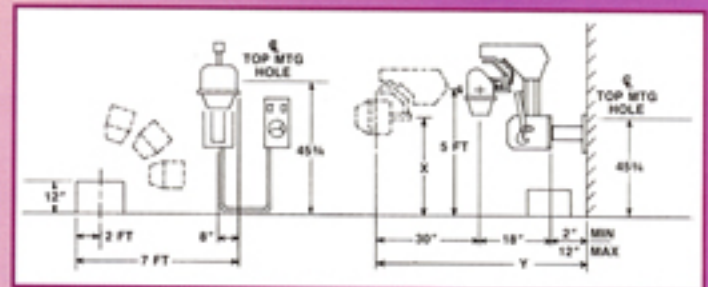
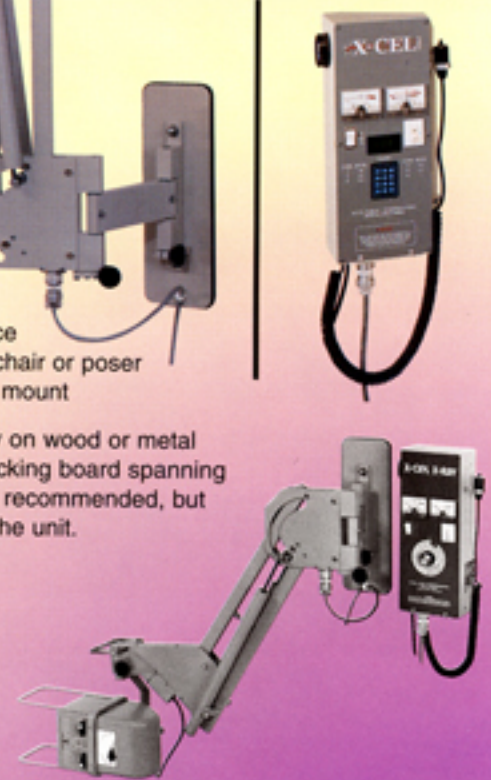
## SHORT ARM WALL P-700 S/A A/C



- 28 inch SID
- Saves floor space
- Take X-rays off chair or poser
- Heavy duty wall mount

Unit mounts easily on wood or metal studs. A wood backing board spanning two metal studs is recommended, but not included with the unit.

INCHES	
C OF TUBE	
X	Y
60	30
56	44
49	50
42	53



## FLIP BASE FB-700 A/C

- 28 inch SID
- Saves floor space
- 3.5" inch base height
- Fits between wall and chair
- Minimum space required: 34" x 51"
- Both laterals possible
- Folds to 18" wide
- Fits in hall



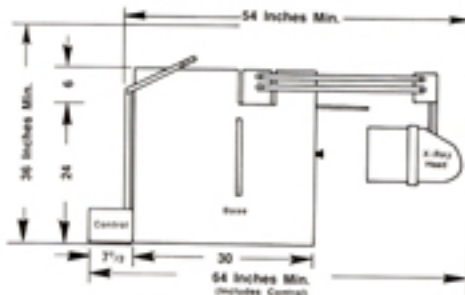
## MID BASE MB-700 A/C

Featured  
on Cover



- 28 inch SID
- Radial Arm
- Mid-Base Poser (MB)
- Base height 6"
- Perfect height for patient and operator use.

DIMENSIONS APPLY TO: MB-700 and LB-700 AC



### CONSIDERATIONS FOR ALL MACHINES

#### No lead in walls required

With proper planning, lead lining the walls is not required. This must be confirmed by your local inspector.

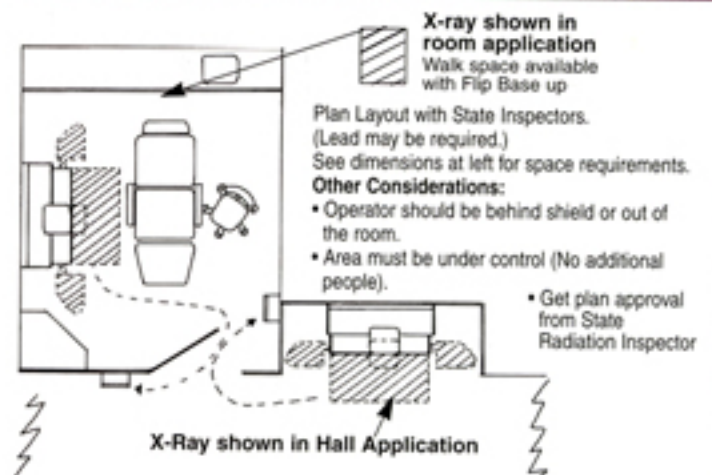
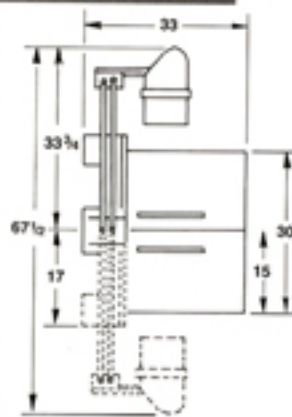
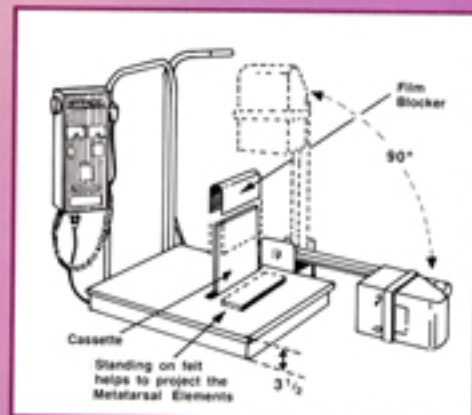
#### Darkroom suggestions

• Light leak check • Proper film selection • Proper film development. Be sure darkroom is safe. Without safe light, check darkroom for leaks. It takes 10 minutes for your eyes to adjust to the dark.

## FLOOR MODEL LOW BASE LB-700A/C



- 28 inch SID
- Radial Arm
- Low-base poser (LB)
- 3.5" Base Height
- Lateral X-rays (as shown below)
- Non threatening lower platform for older patients

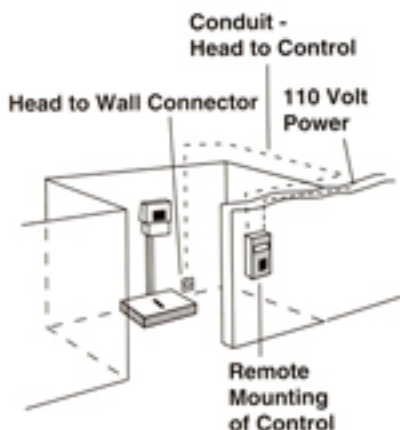


# ADJUSTABLE COLLIMATOR



The X-Cel X-Ray Adjustable Collimator (A/C) was designed to reduce unwanted scatter radiation consistent with the government requirements. All X-Cel X-Ray units are certified to meet or exceed the FDA 1020.30 requirements.

Because of the unique design features, some of which are proprietary and patented, the X-Cel X-Ray unit has enjoyed a reputation for "long life".



**SOLID STATE CONTROL** -- Adjustable kVp selection -- stabilized mA (tube filament) voltage -- 10 or 15mA switch selection (90 kVp/10mA only) -- audible emission buzzer -- mA meter for visual indication of emission with adjustment to compensate for tube filament aging -- exposure button on coiled cord -- digital microprocessor control timer (from 6/60 (.1 sec.) to 180/60 (3 sec.)) -- Remote mounting with 15 ft. cable.

**X-RAY TUBE** -- 1.0 mm focal spot gives sharp radiographic results and long life.

**RADIOGRAPHIC PLATFORM** -- 30 X 30 X 6 inches (MB-700 A/C); 24 x 30 x 3 1/2 inches (LB-700 A/C); 30 x 40 x 6 inches (Extended Mid Base) -- hand railing for stability and security -- film well has provisions for 8 x 10 and 10 x 12 film cassettes.

**RADIAL TUBE ARM** -- Spring counter balanced -- fixes SID at 28 inches on floor models -- right lateral standard; opposite laterals available. Mobile and wall units operate at 28 inch SID.

Model	Description
MB-700 A/C	70 kVp Floor 6" Base
LB-700 A/C	70 kVp Floor 3 1/2" Base
FB-700 A/C	70 kVp Floor 3 1/2" Flip Base
P-700M A/C	70 kVp Mobile
P700W/SA A/C	70 kVp Short Arm Wall

ADDED COST OPTIONS: 900 Series (90 kVp/10mA)

- Opposite Lateral
- In the wall wiring (requires electrician)
- 220 V/50 Hz operation
- All options must be ordered with the unit.

**P-900 SERIES** -- The 900 series offers more kVp power. Other features are similar to the 700 series, including adjustable kVp from 50 to 90.

Series 900	Series 700
50-90 kVp/10mA	50-70 kVp/10mA
2.59mm AL Equivalent	50-70 kVp/15mA
	1.5 AL Equivalent

**POWER REQUIREMENTS** -- Separate 105/130 Volts, 20 amp grounded service. (It is recommended that the unit be connected to a 20 amp GFCI outlet.)

**STANDARD COLOR** -- Light "Smoke" Gray

**ORTHOPOSER** -- Not supplied on Wall and Mobile

**WARRANTY** -- 5 Year Mechanical -- 2 Year Electrical. Plus 3 Year Electrical Prorated

220 Volt AC, 50 Hertz Available

**AMERICAN COMPONENTS**

Whenever feasible, products of American manufacture and origin are used.

**X-CEL**  
X-RAY CORPORATION

4220 WALLER DRIVE  
CRYSTAL LAKE, IL 60012

MAIL: P.O. BOX 1857  
CRYSTAL LAKE, IL 60039-1857  
(815) 455-2470

FAX (815) 455-4732

web site: [www.xcelxray.com](http://www.xcelxray.com)

e-mail: [xcelxray@mc.net](mailto:xcelxray@mc.net)

MANUFACTURING X-RAY EQUIPMENT  
IN U.S.A. SINCE 1946

